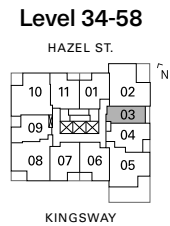
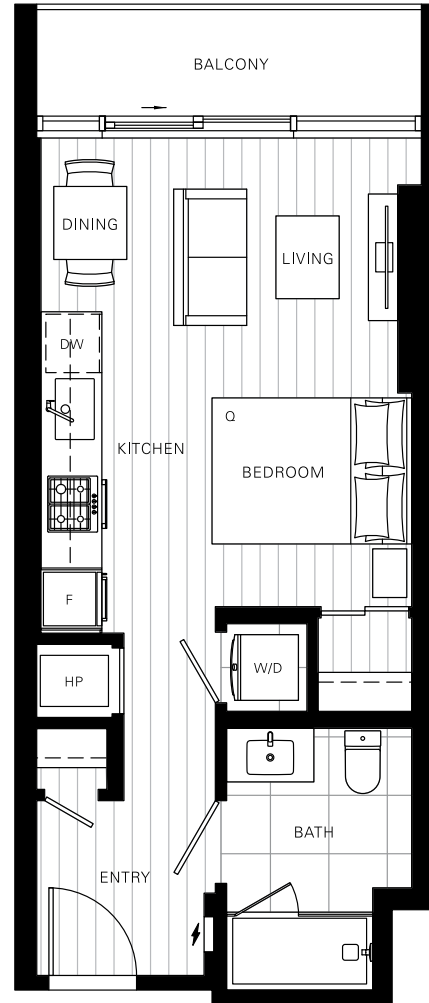


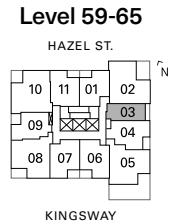
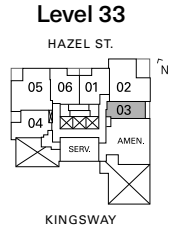
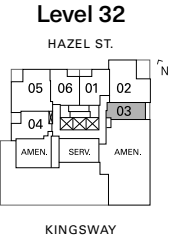
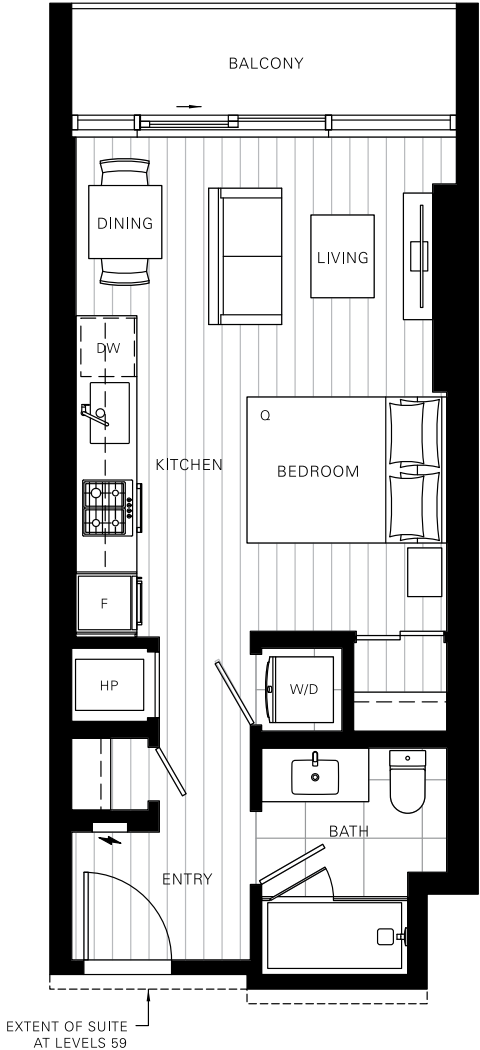
## Plan A1a Studio



Interior: 409 sf  
 Exterior: 50 sf  
 Total: 459 sf

The developer reserves the right to make changes and modifications to the information contained herein. Floorplans and floorplates are subject to change without notice. Please contact a developer sales representative for details. This is not an offering for sale, as an offering can only be made after the filing of a disclosure statement, and only in jurisdictions where qualified in accordance with applicable local laws. E.&O.E.

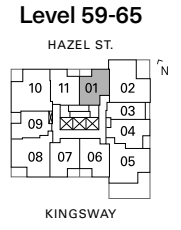
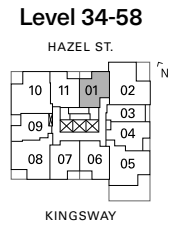
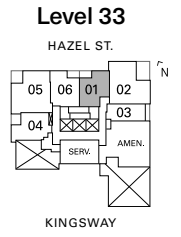
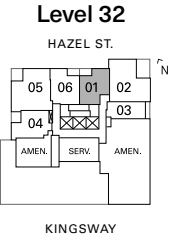
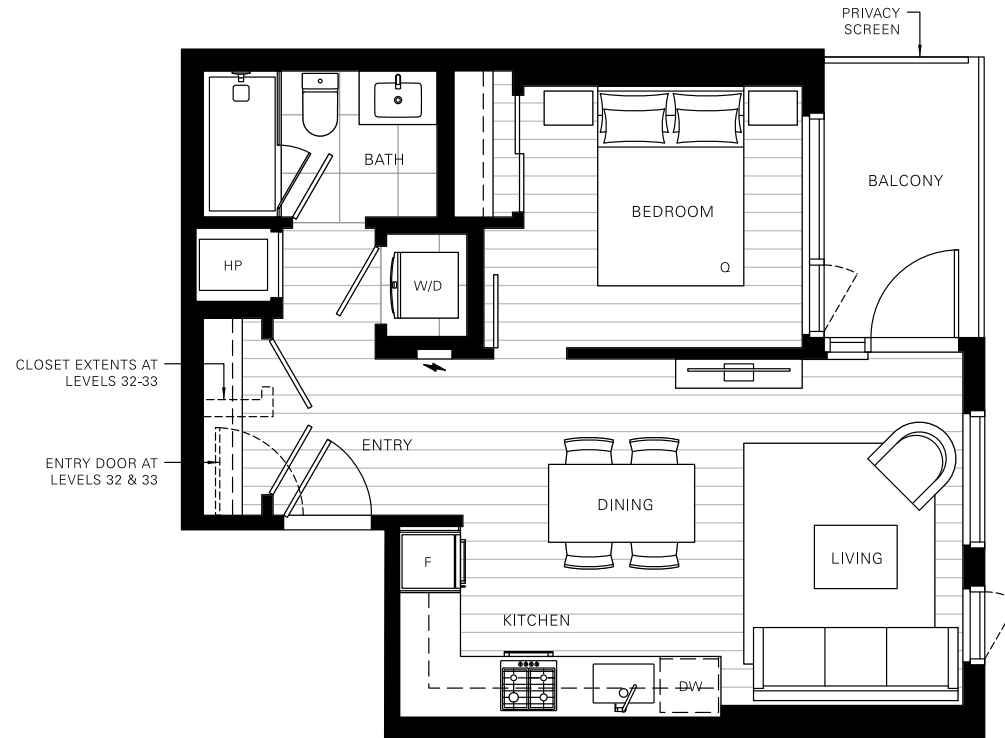
## Plan A1b Studio



Interior: 409-411 sf  
 Exterior: 50 sf  
 Total: 459-461 sf

The developer reserves the right to make changes and modifications to the information contained herein. Floorplans and floorplates are subject to change without notice. Please contact a developer sales representative for details. This is not an offering for sale, as an offering can only be made after the filing of a disclosure statement, and only in jurisdictions where qualified in accordance with applicable local laws. E.&O.E.

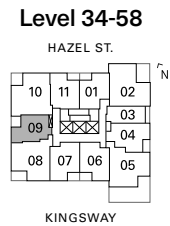
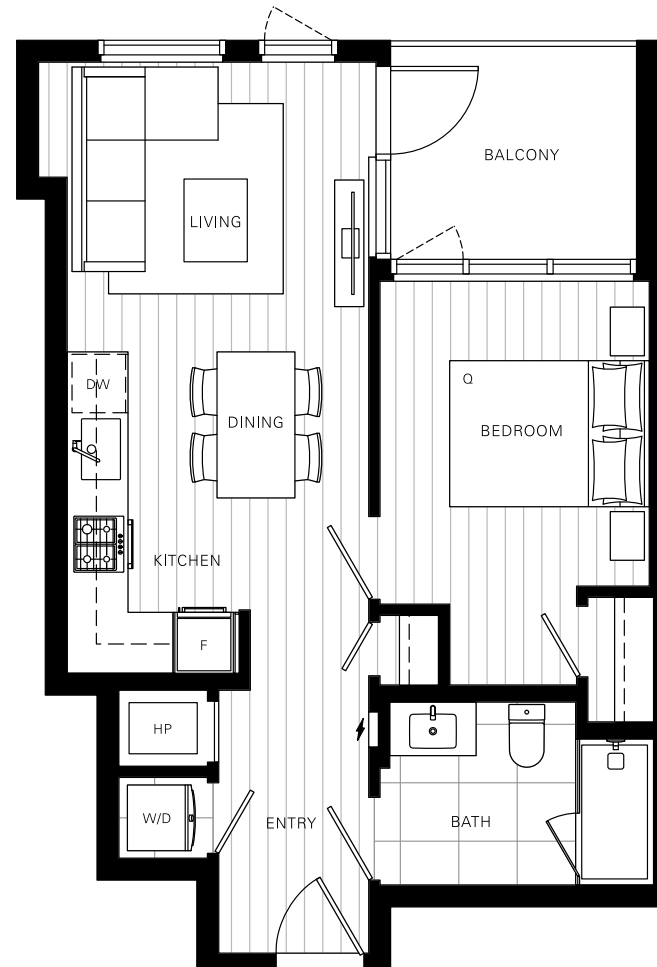
## Plan B 1-Bedroom



Interior: 521-529 sf  
 Exterior: 52 sf  
 Total: 573-581 sf

The developer reserves the right to make changes and modifications to the information contained herein. Floorplans and floorplates are subject to change without notice. Please contact a developer sales representative for details. This is not an offering for sale, as an offering can only be made after the filing of a disclosure statement, and only in jurisdictions where qualified in accordance with applicable local laws. E.&O.E.

## Plan B1a 1-Bedroom

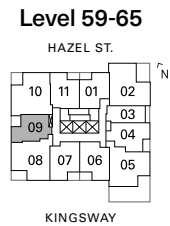
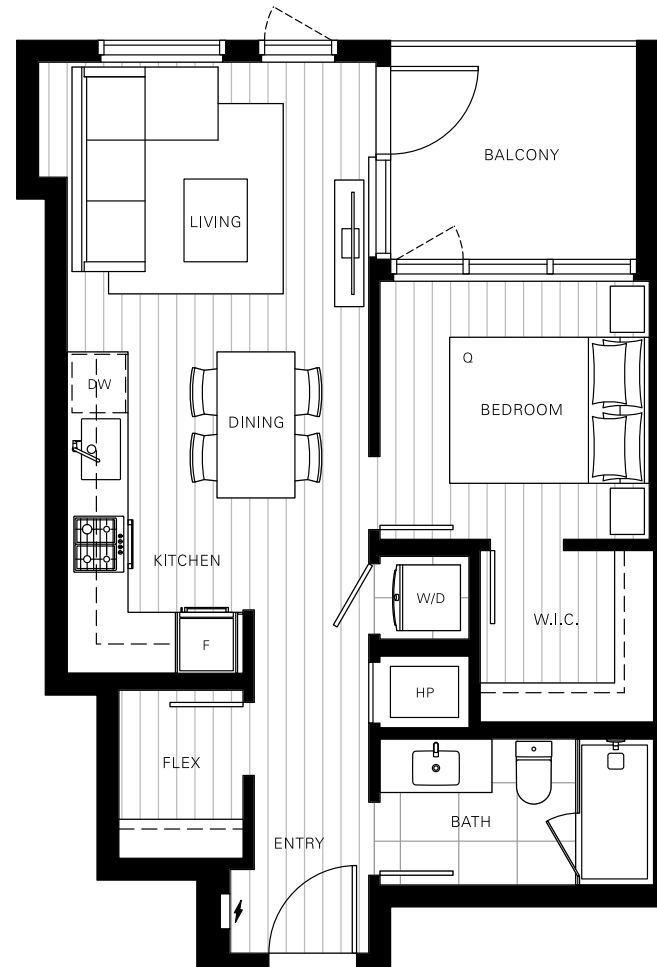


Interior: 548 sf  
Exterior: 63 sf  
Total: 611 sf

The developer reserves the right to make changes and modifications to the information contained herein. Floorplans and floorplates are subject to change without notice. Please contact a developer sales representative for details. This is not an offering for sale, as an offering can only be made after the filing of a disclosure statement, and only in jurisdictions where qualified in accordance with applicable local laws. E.&O.E.

## Plan B1b

1-Bedroom + Flex

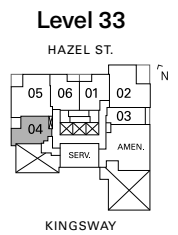
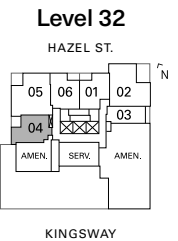
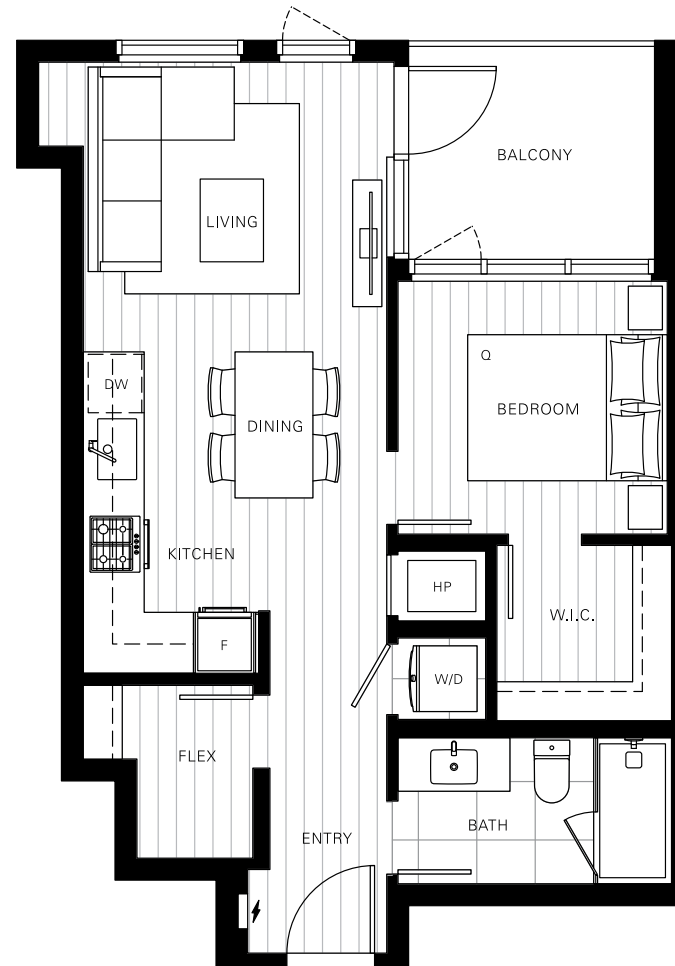


Interior: 548 sf  
 Exterior: 63 sf  
 Total: 611 sf

The developer reserves the right to make changes and modifications to the information contained herein. Floorplans and floorplates are subject to change without notice. Please contact a developer sales representative for details. This is not an offering for sale, as an offering can only be made after the filing of a disclosure statement, and only in jurisdictions where qualified in accordance with applicable local laws. E.&O.E.

## Plan B2

1-Bedroom + Flex

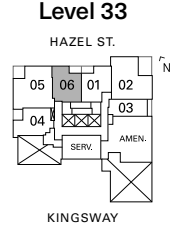
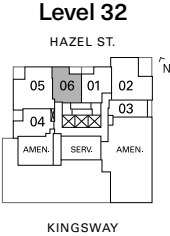
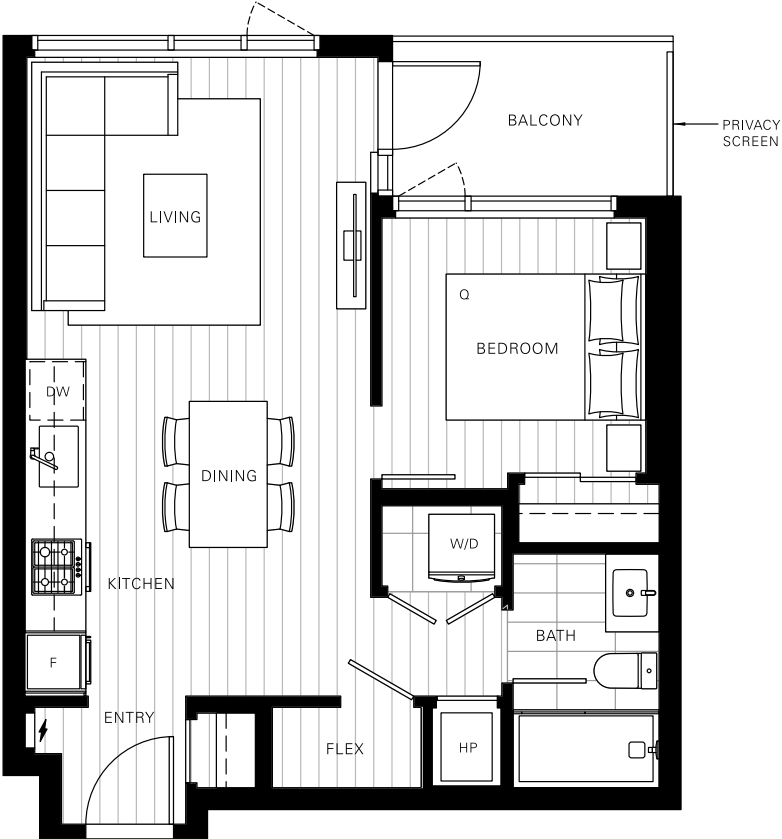


Interior: 574 sf  
 Exterior: 63 sf  
 Total: 637 sf

The developer reserves the right to make changes and modifications to the information contained herein. Floorplans and floorplates are subject to change without notice. Please contact a developer sales representative for details. This is not an offering for sale, as an offering can only be made after the filing of a disclosure statement, and only in jurisdictions where qualified in accordance with applicable local laws. E.&O.E.

## Plan B3

1-Bedroom + Flex

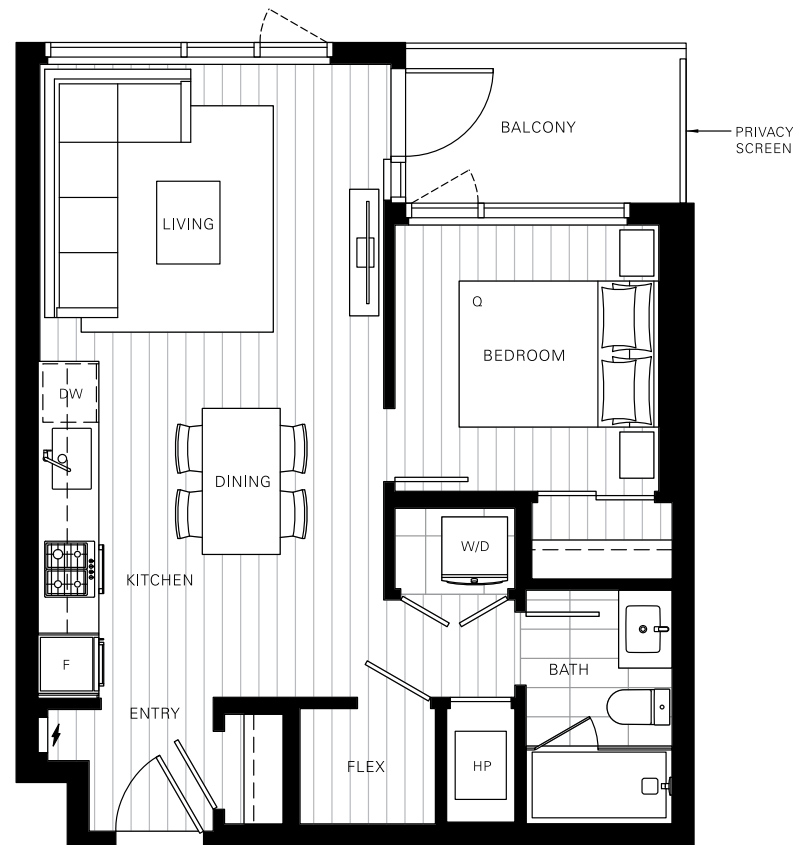


Interior: 546 sf  
 Exterior: 52 sf  
 Total: 598 sf

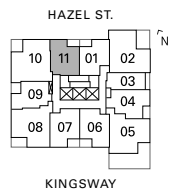
The developer reserves the right to make changes and modifications to the information contained herein. Floorplans and floorplates are subject to change without notice. Please contact a developer sales representative for details. This is not an offering for sale, as an offering can only be made after the filing of a disclosure statement, and only in jurisdictions where qualified in accordance with applicable local laws. E.&O.E.

## Plan B4

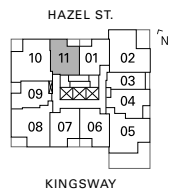
1-Bedroom + Flex



### Level 34-58



### Level 59-65



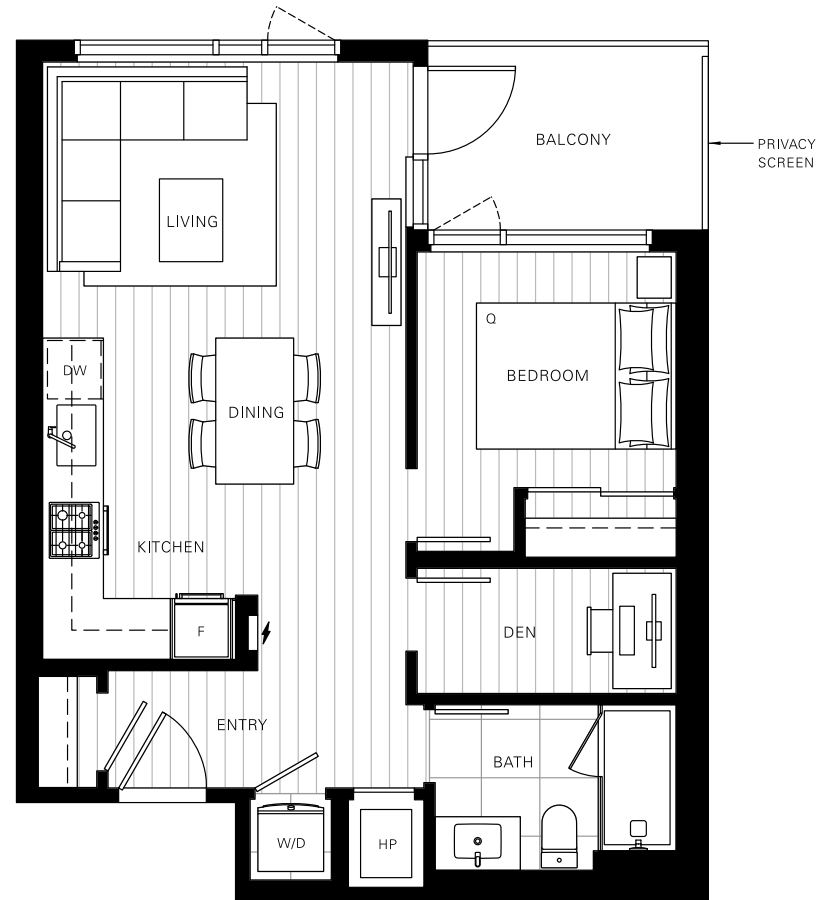
Interior: 561 sf  
 Exterior: 52 sf  
 Total: 613 sf

The developer reserves the right to make changes and modifications to the information contained herein. Floorplans and floorplates are subject to change without notice. Please contact a developer sales representative for details. This is not an offering for sale, as an offering can only be made after the filing of a disclosure statement, and only in jurisdictions where qualified in accordance with applicable local laws. E.&O.E.

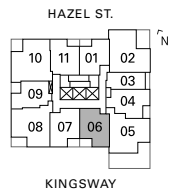


## Plan C

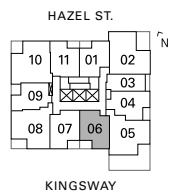
1-Bedroom + Den



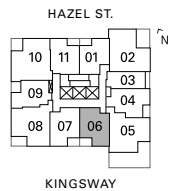
### Level 34-51



### Level 52-58



### Level 59-65



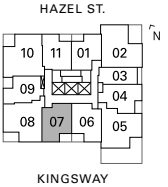
Interior: 597 sf  
 Exterior: 62 sf  
 Total: 659 sf

The developer reserves the right to make changes and modifications to the information contained herein. Floorplans and floorplates are subject to change without notice. Please contact a developer sales representative for details. This is not an offering for sale, as an offering can only be made after the filing of a disclosure statement, and only in jurisdictions where qualified in accordance with applicable local laws. E.&O.E.

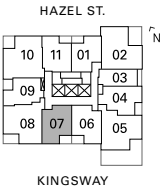
## Plan C1 1-Bedroom + Den



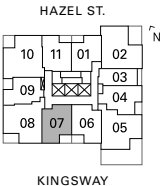
**Level 34-51**



**Level 52-58**



**Level 59-65**

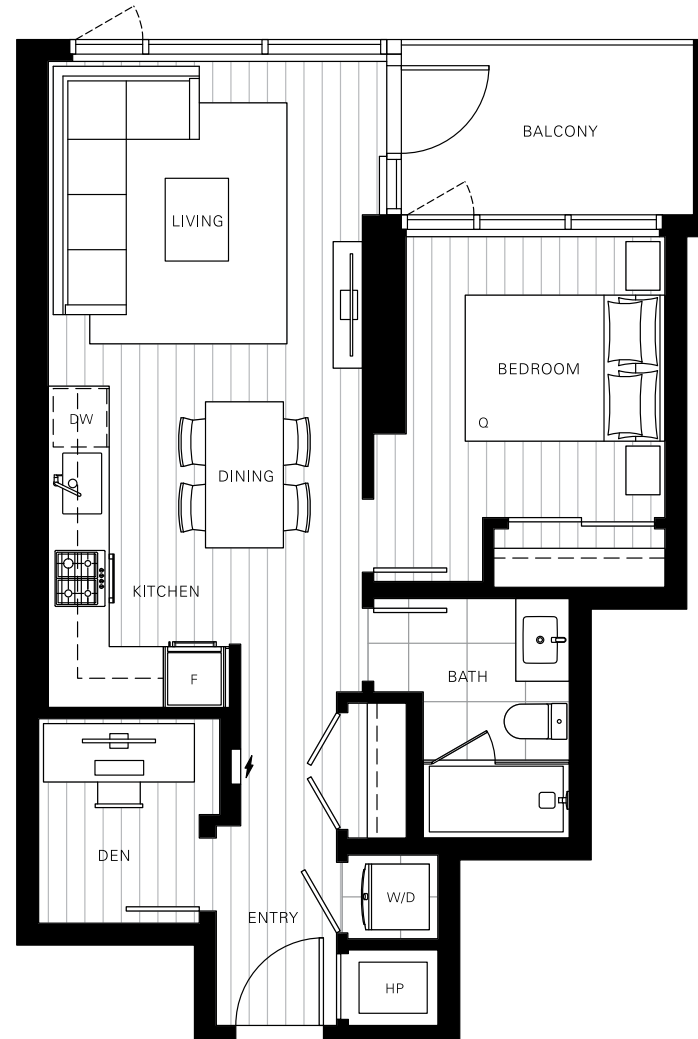


Interior: 601 sf  
 Exterior: 62 sf  
 Total: 663 sf

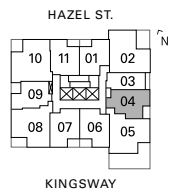
The developer reserves the right to make changes and modifications to the information contained herein. Floorplans and floorplates are subject to change without notice. Please contact a developer sales representative for details. This is not an offering for sale, as an offering can only be made after the filing of a disclosure statement, and only in jurisdictions where qualified in accordance with applicable local laws. E.&O.E.

## Plan C2

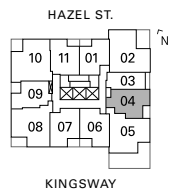
1-Bedroom + Den



### Level 34-58



### Level 59-65



Interior: 607 sf  
 Exterior: 60 sf  
 Total: 667 sf

The developer reserves the right to make changes and modifications to the information contained herein. Floorplans and floorplates are subject to change without notice. Please contact a developer sales representative for details. This is not an offering for sale, as an offering can only be made after the filing of a disclosure statement, and only in jurisdictions where qualified in accordance with applicable local laws. E.&O.E.

## Plan D 2-Bedroom + Den



**Level 34-58**



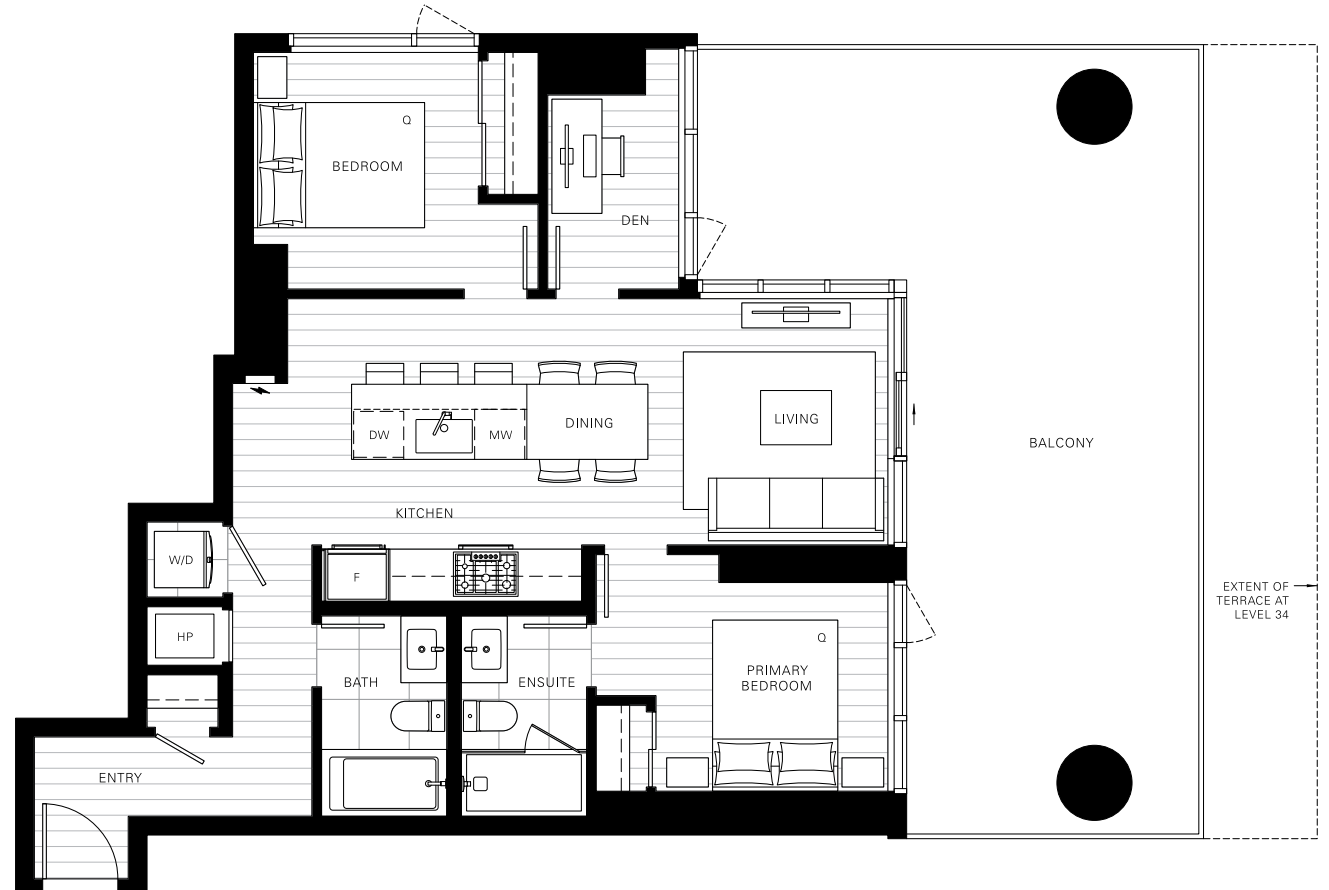
**Level 59-65**



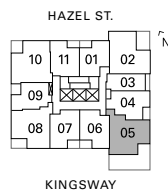
Interior: 834 sf  
 Exterior: 91 sf  
 Total: 925 sf

The developer reserves the right to make changes and modifications to the information contained herein. Floorplans and floorplates are subject to change without notice. Please contact a developer sales representative for details. This is not an offering for sale, as an offering can only be made after the filing of a disclosure statement, and only in jurisdictions where qualified in accordance with applicable local laws. E.&O.E.

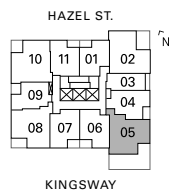
## Plan D1 2-Bedroom + Den



**Level 34-58**



**Level 59-65**



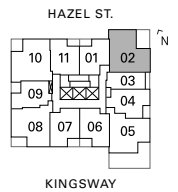
Interior: 836 sf  
 Exterior: 454-618 sf  
 Total: 1,290-1,454 sf

The developer reserves the right to make changes and modifications to the information contained herein. Floorplans and floorplates are subject to change without notice. Please contact a developer sales representative for details. This is not an offering for sale, as an offering can only be made after the filing of a disclosure statement, and only in jurisdictions where qualified in accordance with applicable local laws. E.&O.E.

## Plan D2a 2-Bedroom + Den



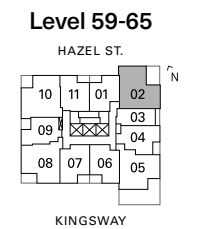
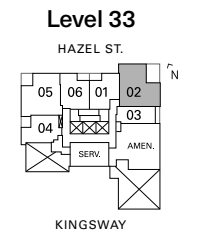
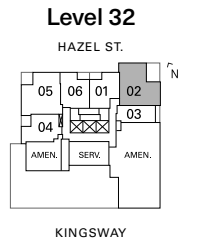
Level 34-58



Interior: 871 sf  
 Exterior: 152 sf  
 Total: 1,023 sf

The developer reserves the right to make changes and modifications to the information contained herein. Floorplans and floorplates are subject to change without notice. Please contact a developer sales representative for details. This is not an offering for sale, as an offering can only be made after the filing of a disclosure statement, and only in jurisdictions where qualified in accordance with applicable local laws. E.&O.E.

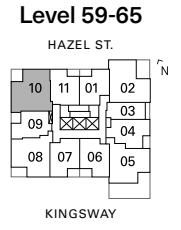
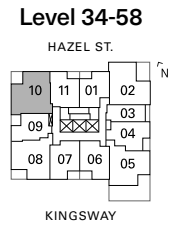
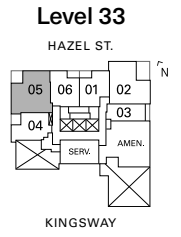
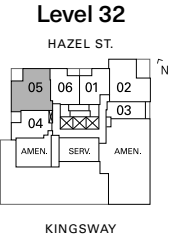
## Plan D2b 2-Bedroom + Den



Interior: 870-871 sf  
 Exterior: 152-158 sf  
 Total: 1,023-1,028 sf

The developer reserves the right to make changes and modifications to the information contained herein. Floorplans and floorplates are subject to change without notice. Please contact a developer sales representative for details. This is not an offering for sale, as an offering can only be made after the filing of a disclosure statement, and only in jurisdictions where qualified in accordance with applicable local laws. E.&O.E.

## Plan E 3-Bedroom



Interior: 905-910 sf  
 Exterior: 86 sf  
 Total: 991-996 sf

The developer reserves the right to make changes and modifications to the information contained herein. Floorplans and floorplates are subject to change without notice. Please contact a developer sales representative for details. This is not an offering for sale, as an offering can only be made after the filing of a disclosure statement, and only in jurisdictions where qualified in accordance with applicable local laws. E.&O.E.